

KUTHANDIZA AZIMAI A KUMWERA KWA AFRICA KUCITA BWINO MALONDA

**Kabuku kacidziwitso ka azimai
amene amacita malonda kunja
kwa dziko.**

Kuthandiza azimai kuti akhale ndi cidziwitso
pa malamulo okhudza ziyeneleso zocitila
malonda mumaiko a kumwera kwa Africa.



Mau Oyamba

Malonda ang'ono ang'ono okhuza kugula ndi kugulisa zinthu kunja kwa dziko amathandizira kucepetsa umphawi ndi njala. Malonda aya amathandiza kwambili pa citukuko ca maiko osauka akumwera kwa Africa. Ndalama zimene zimachokera mu malonda ang'ono ang'ono aya ndizofunika kwambiri pa kucepesako umphawi.

Anthu ambili amene amacita malonda amutundu uyu ndi azimai. Ofufuza anapeza kuti pa anthu 100 amene amacita malonda ogula ndi kugulisa zinthu kunja kwa dziko amu Southern Africa Development Community (SADC) 70 ndi azimai. Pocita malonda amutundu uyu azimai amakumana ndi mavuto ambili poyelekezela ndi azibambo. Ena mwa mavuto amene amakumana nao ndi; kusakhala ndi njila zabwino zowathandiza kudziwa ndi kumvetsa malamulo okhuza misonko ndi mafomu a pa boda, kusakhala ndi citetezo cokwanila ca azimai ndi ana pa boda, ndiponso kusowelatu zipatala ndi zimbuzi mu maboda.

Colinga ca kabuki aka ndi kuthandiza pa limodzi mwa mavuto aya, kufotokoza zimene azimai awa ayenela kudziwa zokhuza mafomu a mu maboda. Kabuku aka kakufotokoza mbali izi; dongosolo lounikila zinthu zimene zimabwezela mumbuyo anthu amalonda owoloka maboda (non-tariff barrier reporting system), dongosolo la mu m'gwilizano wofewetsa nkhani za malonda pakati pa maiko a kumawa ndi kumwera kwa Africa (Common Market for Eastern and Southern Africa (COMESA) Simplified Trade Regime), mndandanda wa katundu wodziwika bwino (common list of goods), mfundo za mu mgwilizano wa zamalonda wa maiko a mu SADC (SADC Free Trade Area) ndi mfundo zocilikiza ufulu wa azimai a malonda (the voice of women traders).

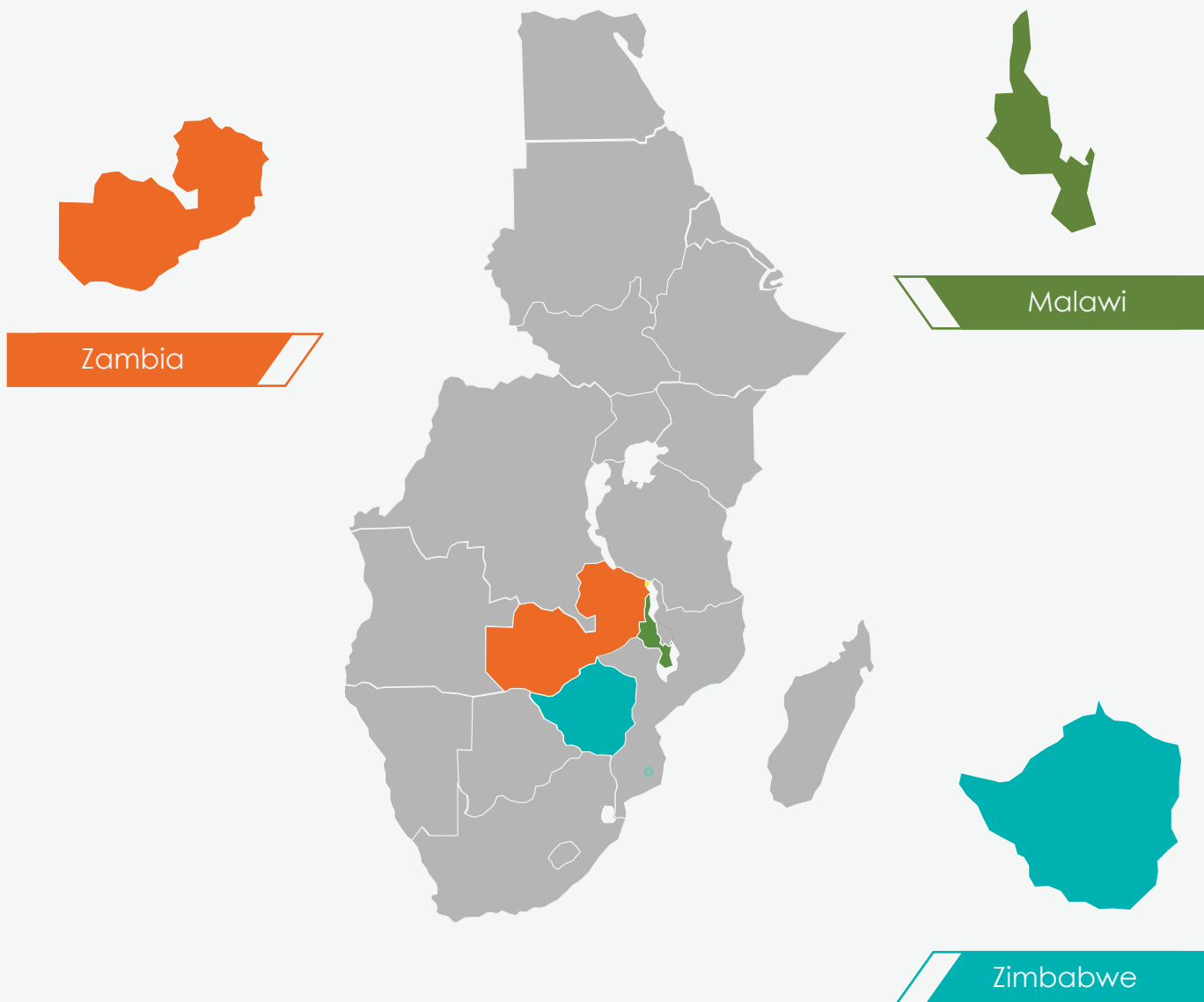


Nchito yokonza kabuki aka yacitidwa ndi a Southern Africa Trust ndi Southern Africa Cross Border Tradeers Association ndi thandizo locokela ku bungwe ya OSISA
www.southernafricatrust.org; www.sacbta.org;

ZVIRI MUKATI

1. Dongosolo lofewetsa nkhani za malonda mmaiko a COMESA.	4
2. Kodi COMESA STR ndi ciani?	5
3. Kodi muli ndi ziyeneleso zogwilitsa ntchito COMESA STR?	6
4. Momwe mungalowesele kapena kutulusa katundu pogwilitsila ntchito dongosolo la COMESA STR.	10
5. Gulu 1: STR COMMON LIST (Katundu Wovomezedwa): Zambia ndi Malawi.	12
6. Gulu 2: STR COMMON LIST (Katundu Wovomezedwa): Zambia ndi Zimbabwe.	15
7. Gulu 3: STR COMMON LIST (Katundu Wovomezedwa): Zambia ndi Zimbabwe.	20
8. Gulu 4: STR COMMON LIST (Katundu Wovomezedwa): Malawi ndi Zambia.	22
9. Gulu 5: STR COMMON LIST (Katundu Wovomezedwa): Malawi ndi Zimbabwe.	24
10. Dongosolo la non-tariff barrier reporting system.	28
11. Kodi njila iyi imagwira ntchito motani?	31

DONGOSOLO LOFEWETSA NKHANI ZA MALONDA M'MAIKO A COMESA



Kodi COMESA STR ndi ciani?

Common Market for Eastern and Southern Africa (COMESA) STR ndi njira imene bungwe la COMESA linaika popitisa patsogolo nchito za malonda ocitidwa ndi anthu a malonda ang'ono ang'ono amene amagula ndi kugulitsa katundu wocepa chabe mu maiko ena.



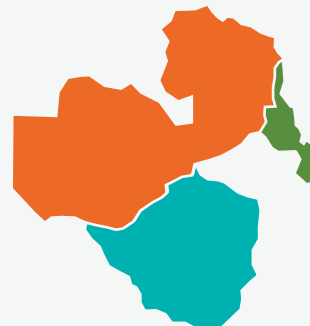
Amalonda angathe kulowesa ndi kutulusa katunduwosapitilila pa \$2000, popanda kulipila musonko malinga ndi mgwilizano wa misonko wa mu maiko a mu COMESA.



Colinga ca dongosolo iyi ndi kucepetsa zinthu zofunika kucitidwa kuti munthu atuluse kapena kulowesa katundu wake mu dziko ndiponso kucepetsa ndalama zimene amalonda awa amalowesa mu malonda ao.



Dongosolo la COMESA STR linayamba kale kugwila ntchito m'maiko atatu a mu SADC, Malawi Malawi, Zambia, ndi Zimbabwe



Panaikidwa zinthu zinai zothandiza kuti mfundo za mu dongosolo ili zizisatidwa; satifiketi yofotokoza mwacidule za kumene katundu ukucokela (Simplified Certificate of Origin), fomu yofotokoza mwacidule za misonko (Simplified Customs Document), mndondomeko wodziwika bwino (Common List), ndi malile a mtengo wa katundu wogulisidwa mu dongosolo ili (Threshold). Dongosolo la STR lilinso ndi munthu wotchewa TIDO (Trade Information Desk Officer) yemwe ntchito yake ndi kukuthandizani pa zimene mukufunikila kudziwa.



Kodi muli ndi ziyeneleso zogwilitisa ntchito COMESA STR?

Ziyeneleso ndi izi:

- Ngati katundu amene muli nao amalimidwa ndi kupangidwa mu maiko a COMESA ndiye kuti uli mu ndondomeko ya STR
- Ngati katunduyu adzagulitsidwa kudziko loyandikana ndi dziko lanu (osati dziko limene mukudutsamo)
- Ngati katunduyu supitilila malile a mtengo wa katundu wololeka kutenga malinga ndi dongosolo la STR (US\$ 2000)
- Ngati katunduyo ukupezeka pa mndondomeko wa katundu wodziwika bwino wotchedwa Common List (simuyenera kulipira musonko uliwonse pa katundu wonse wa mndondomeko umenewu)
- Funsani a TIDO kuti akuoneseni mndandanda wa wa Common List ngati sanaike pa notisi bodi ya pa boda
- Katunduyu ayenera kugulitsidwa kudziko kumene ayenda osati mnjila musanafike kudzikolo.

Kodi mndandanda wa katundu woziwika ndi ciani?

Mndandanda wa katundu wodziwika bwino ndi mndondomeko wa katundu amene mayiko awiri ogundizana malire anagwirizana kuti azidutsa m'maboda awo popanda kulipira msonko malingana ndi dongosolo la COMESA STR.



Kodi pamafunika kusaina mapepala ati kuti mugwilitsile ntchito nchito dongosolo la COMESA STR?

Kuti mugwilitsile ntchito STR, muyenela kukhala ndi ma invoisi kapena kuti malisiti a katundu umene mufuna kutuluka nao kapena kulowa nao mu dziko. Kuphatikiza apo, pamafunikila zikalata za cilolezo kuti mutuluse kapena kulowesa katundu wina wake wa zaulimi ndi ziweto.

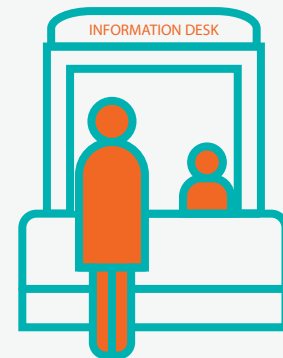
Mukasonyeza satifiketi yofotokoza mwacidule za kumene katundu akucokera (Simplified Certificate of Origin) ndiye kuti simungalipile musonko pa katundu wanu ndipo simungapatsidwe malile aliwonse a mtengo wa katundu umene mukuloledwa kutenga, malinga ngati katundu wanuyo uli pa Common List ndipo mwamupeleka pamodzi ndi satifiketi.



Malo Othandiza Zimene Mukufunikila Kudziwa

Malo otchedwa Trade Information Desk aikidwa m'maboda osiyana siyana mogwilizana ndi dongosolo la COMESA Simplified Trade Regime (STR) ndi colinga cothandiza ndi kudziwitsa anthu amalonda zinthu zimene afunikila podutsa maboda.

Amathandizanso anthu amalonda ang'ono ang'ono otelo amene afuna kupanga kagulu kawo ka amalonda kovomelezeka ndi boma.



Pa malo a Trade Information Desk pamakhala Trade Information Desk Officer (TIDO) amene amaikidwapo ndi tumabungwe toona za malonda odutsa pa boda imeneyo totchedwa Cross Border Traders Associations (CBTA) kapena mabungwe oimira tumabungwe tumenetu.

Colinga ca TIDO ndi kuthandizira anchito zamalonda kukhala ndi cidziwitso pamalonda ao kuwadziwisa zina ndi zina zokhuza katundu amene akulowesa kapena kutulusa mu dziko, kuphatikizapo zikalata zonse zimene afunikila. Ngati angafunikilenso, angathandizenso m'njira imeneyi amalonda ena ndi anthu kapena mabungwe amene amakhudgidwa ndi malonda owoloka boda. Izi zikuphatikiza kuti azikhala ndi zonse zofunikila zokhuza pa nkhani izi (koma osati zimenezi cabe):-

- Katundu amene anthu amagula ndi kugulisa kwambili
- Ziwerengelo zosiyana siyana zokhudza kuchuluka kwa anthu amalonda amene akugwiliitsila ntchito dongosolo la STR STR)
- Nkhani zokhudza kuphwanya lamulo kapena kucita nkhanza pocita zinthu ndi amalonda amenewa monga pofuna kuti apeleke ziphuphu kapena powazunza ndiponso zokhudza zinthu zimene zimabwezela m'mbuyo amalonda owoloka maboda

- Zokhudza nthawi imene katundu ayenela kukhala pa boda asanaloledwe kulowa kapena kutuluka m'dziko
- Kapezedwe ka zikalata kapena mapepala ofunikira ndiponso ngati aboma amene akugwira ntchito paboda akukwanitsa kuthandiza amalonda onse pamene ayamba kuculuka
- Kukonza malipoti amwezi uli wonse kapena apa miyezi itatu ili yonse ogwiliitsidwe ntchito ndi Cross Border traders Associations (CBTA), COMESA ndi aboma;

Kudziwitsa ena ntchito za CBTA

- Kupeza mitengo yoyenelela yogulitsila katundu amene amalonda ambili amanyamula.
- Kudziwitsa anthu dongosolo la misonko ndiponso kusintha kulikonse pankhaniyi.
- Kudziwitsa amalondawa za malo ogona, mayendedwe, ndi zinthu zina zotele zimene angafunikire paulendowo
- Kulangiza amalonda pa nkhani zokhudza misonko, zofunika kutsatila pa zamalonda ndi podutsa boda ndiponso polemba zofunika m'mafomu ndi mapepala ena a boma paboda.

Dongosolo lololela katundu kulowa kapena kutuluka m'dziko

Amalonda akafika pa boda ayenela kusiyana katundu wawo kuti katundu amene ali pa mndondomeko wa katundu wodziwika bwino (Common List) akhale payekha. Akacita telo, azitenga fomu yofotokoza mwacidule za misonko ija, yotchedwa Simplified Customs Document, ndipo alembepo katundu wawo wonse amene apezeka pa mndondomeko wa Common List. Satifiketi yofotokoza mwacidule za kumene katundu akucokela yotchedwa COMESA Simplified Certificate of Origin iyenera kusainidwa ndi kuikidwa cidindo ndi munthu woona za misonko ya boma pa katundu wolowa m'dziko (customs).

Katundu amene amafunika cilolezo kuti alowe kapena kutuluka m'dziko kudzela mu dongosolo la COMESA STR

Katundu wotsatilawu amafunika cilolezo cocokela kwa amene ali ndi mphamvu zopeleka cilolezo kuti muulowese kapena kuutulusa m'dziko; Mankhwala, zakudya zakumunda, zinthu zocokela ku zomela ndi ziweto monga, nkhwala ophera tizilombo, malalanje kapena maolenji, nthochi kapena mabanana, mkaka, mazila, nsomba, nyama kapena nkuku.

Ocita malonda ayenera kulandira zilolezo zochokera ku Unduna wa Zaumoyo, Unduna wa Zaulimi ndi bungwe Loyanganila za Cilengedwe (Environmental Management Agency). Zinthu zokhazo zomwe zimakwanilitsa ziyeneleso zonse zokhuza zakudya, zomela ndi nyama kuphatikizapo citetezo pa cilengedwe ndi zimene zingaloledwe kutulusidwa kapena kulowesedwa mu dziko.

Kodi mukufunikirabe kulipira musonko wotchedwa Value-Added Tax (VAT) kapena Withholding Tax ngati muli ndi katundu ung'ono?

STR imagwila cabe nchito pa misonko yolowesela katundu mu dziko, conco, mu maiko ena, malinga ndi malamulo awo a misonko, mungafunikile kulipira musonko wa Value-Added Tax (VAT) excise dutyndi withholding Tax.

MOMWE MUNGALOWESELE KAPENA KUTULUSA KATUNDU POGWILITSILA NTCHITO DONGOSOLO LA COMESA STR

SITEPE 1 PITANI PA OFESI YA IMMIGRATION

Pitani pa ofesi ya immigration ndi kudindisa pasipoti yanu



SITEPE 2 KONZANI KATUNDU WANU

Ngati mukulwesa katundu musiyandise katundu wanu m'magulu otsatilawa:

Ikani pambali katundu wopangidwila m'cigawo ca COMESA umene uli pa mndandanda wotchedwa Common List womwe simuyenela kulipilila musonko, ndipo muike katundu winanso pambali umene umapangidwila m'cigawo ca COMESA koma supezeka pa mndandanda uyu ndipo uyendela kulipilidwa musonko.



SITEPE 3 SATIFIKETI YOTCHEDWA SIMPLIFIED CERTIFICATE OF ORIGIN

Lembani zonse zofunikila pa COMESA Simplified Certificate of Origin, imene ili satifiketi yofotokozwa mwacidule za kumene katundu ucokela. Satifiketi iyenera kusainidwa ndi kudindidwa ndi wogwira ntchito ku ofesi ya Customs kuikila umboni pa katundu umene uli pa mndandanda wa Common List. OSALIPILA NDALAMA munthu wa mu ofesi ya Customs kuti alembe fomu iyi.



Ngati pa boda pali munthu wogwila nchito ku ofesi ya Information Desk (TIDO), angakuthandizeni kulemba fomu iyi ndiponso angayanke mafunso omwe mungakhale nawo.

MOMWE MUNGALOWESELE KAPENA KUTULUSA KATUNDU POGWILITSILA NTCHITO DONGOSOLO LA COMESA STR

SITEPE 4 CILOLEZO PA KATUNDU WOKHUZA ZA ULIMI KAPENA ZA NYAMA

Pemphani cilolezo kucokela kwa awo ali ndi udindo wopeleka cilolezo ngati muli ndi malonda a za ulimi kapena nyama kapena cina cilichonse comwe cimafunikila cilolezo capadera.



SITEPE 5 KULIPILA DUTY NDI VAT

Simungalipile musonko uli wonse wa Customs pa katundu omwe ukuwoneka pa mndandanda wa Common List koma mungafunikile kulipila musonko wa Excise duty kapena wa Value Added Tax (VAT) pa katundu uyu.

Musonko wa Customs Duty ndi wosiyana ndi wa Excise Duty. Nthawi zambili, Excise Duty imalipilidwa pa katundu wina wake monga zakumwa zozizilitsa kukhosi, mowa wotchedwa ma spirits, fodya, zozola-zola kapena zozikomesela ndi katundu wina uli wonse umene ulowesedwa mu dziko.

Mukatelo pitani kwa olipilisa kuti mukalipile ngati pali musonko uli wonse wa Customs Duty, Excise Duty kapena VAT umene muyenela kulipila.

Mukasiliza zonse zofunika, muzaloledwa kupita ndi katundu wanu

Ngati simukumvetsa kapena mukali kufunika kudziwa zambili pa zokhuza COMESA STR funsani a TIDO pa malo a Trade Information Desk amene ali pa boda kapena mungafunse a ofesi ya customs kapena a Unduna woyang'anira pa Malonda



Gulu 1: STR COMMON LIST (Katundu Wovomezedwa):

Zambia ndi Malawi pa nthawi pamene kabuku aka kanali kusindikizidwa

Dzina la Katundu	Nambala ya HS
Mbuzi zamoyo	010420
Nkhosa zamoyo	010410
Akalulu amoyo	010690
Nsomba za fuleshi (nsomba zomoyo sizololedwa)	030269
Nsomba zouma, zayanika kapena zowamba	030569
Mkaka wa manzi, yogati ndi kilimu	040110 - 040130
Mbatata ndi kacamba	070110 - 070190
Soya binzi	120100
Nshawa	120210 - 120220
Mpunga	100610 - 100640
Anyezi	070310
Nthochi	080300
Bowa (wokhala ndi zilembo, zosonyeza kumene unalimidwa)	070951
Tomato	070200
Mbewu za mpenyadzuwa (osati zokabzala)	120600
Nyemba zouma (osati zokabzala)	071310 - 071390
Nandolo zouma (channa)	071320
Masamba a tii	090230
Khofi	090111 - 090190
Shuga	170111
Zosemasema	442010 - 442090
Mipando ya nsungwi	940190
Cakudya ca ziweto	230800, 230910
Fuluti juwisi	200912 - 200990
'Super Maheu (Tobwa woikamo zokomesela)	290690
Mabisiketi	190531

Dzina la Katundu	Nambala ya HS
Nyama ya soya	21061090 – 23040000
Simenti	252329 – 252390
Laimu yopentela	252210



Gulu 2: STR COMMON LIST (Katundu Wovomezedwa): Zambia ndi Zimbabwe pa nthawi pamene kabuku aka kanali kusindikizidwa.

Dzina la Katundu	Nambala ya HS
Nyama zamoyo	0101 kusvika 0106
Mbatata (ziwisi kapena zamukakopo)	0701
Tomato (uwisi kapena wamukakopo)	0702
Anyezi, galiki, mavwende	0703
Kabici, kolifulawa, ndi zina zotele.	0704
Letesi	0705
Kaloti, mpilu, comoliya, bitiluti, ndi zakudya zina zomela pansu	0706
Nkhaka ndi mponda	0707
Nandolo, nyemba ndi nyemba zina (ziwisi kapena zamukakopo)	0708
Ndiyo zina za masamba (katsitsumzukwa, biringanya, udzu winawake wothcedwa celery, bowa, ndi zina zotele)	0709
Ndiyo za masamba zowuma (kuphatikizapo bowa wosiyana-siyana)	0712
Nyemba zouma, chickpeas, mphodza (kuphatikizapo mbewu zokabzala)	0713
Mbewu	0713
Nthochi	0803
nkhuyu, zinanazi, mapeyala, ma gwava, mango	0804
Malalanje, mandarin, mphesa, mandimu	0805
Mphesa (ziwisi kapena zouma)	0806
Mapapaya	0807
Khofi (wokazinga / wosakazinga, ali ndi kafeni/ alibe kafeni)	0901
Tiyi (wobiriwira ndi wakuda)	0902
Mafuta a Soya binzi	1507
Mafuta a nshawa	1508
Mafuta a mbewu ya mpenyadzuwa, ya safiro kapena ya thonje	1512

Dzina la Katundu	Nambala ya HS
Mafuta ena ocokela ku ndiyo za masamba	1515
Majalini	1517
Shuga yocokela ku nzimbe kapena ku biti	1701
Zakudya zosekemela (kuphatikizapo chokoleti yoyela ndi chungamu wopanda cocoa)	1704
Chokoleti ndi zakudya zina zomwe zimakhala ndi shuga	1808
Zakudya za ana akanda zogulitsidwa mu gulosale (kupatulapo mkaka wa ana, monga Lactogen)	190110
Tomato (wokonedwa kapena wosungidwa osati kugwilitsila nchito viniga kapena acetic acid)	2002
Jamu wosiyana-siyana, mamededi	2007
Pinuti bata	200811
Fuluti juwisi	2009
Yisiti	2102
Supu	2104
Madzi (kuphatikizapo madzi amubotolo oikamo maminelo, kapena gasi, okhala ndi shuga kapena zotsekemela zina)	2202
Vinyo	2204
Whisky, rum, gin, vodka, liqueurs, ndi zina zotele.	2208
Viniga	2209
Simenti	2523
Thonje	3005
Penti ndi vanishi (monga: Astra, Chroma, Promac, Splash, Dulux ndi Prochem)	3208 - 3210
Inki yosindikizila, yolembela kapena yojambulila ndi inki yamitundu ina	3215
Mapefyumu osiyana-siyana	3303
Mankhwala ozikongoletsa kapena ndi ozola pathupi	3304
Mankhwala a tsitsi	3305
Sopo	3401

Dzina la Katundu	Nambala ya HS
Mankhwala osukila ndikuyeretsa	3402
Mapolishi a nsapato	3405
Mapaipi apulasitiki ogwilitsila nchito pothilila	3917
Mapepa apulasitiki	392100
Masaka ndi matumba apulasitiki	392321 - 392329
Mbale, mapoto, ndi zipangizo zina zotele ndi zinthu zina zapulasitiki zogwilitsidwa ntchito ku cimbuzi (kuphatikiza zinthu za pulasitiki monga zitini za maluwa, makapu ndiponso mbale)	3924
Matanki amadzi a pulasitiki	392510
Magolovu apulasitiki	401511
Ma lenikoti apulasitiki	401590
Matumba a zikwama zazikopa, ndi zina zambili.	4202
Zipangizo zosiyana-siyana zacikopa	4203
Matabwa octhedwa particle board	441011
Mawindo amatabwa, zitseko, nsanamila ndi mitanda, matabwa oyala pansu, ndi zina zambiri.	4418
Ma basiketi	4602
Mapepala oyelesela	4707
Tumabuku tolebela, mabuku a mapepala olembela makalata, mabuku akusukulu, mafoda, zikuto za mafaelo ndi zina zotelo.	4820
Pepala	4821
Mabuku osindikizidwa, timabuku, timapepala ndi zinthu zina zosindikizidwa	4901
Zidoili zoluka pa manja ndi nsalu zina zolukidwa	5805
Zoluka-luka (monga zokongolesela penapake kapena zokongoletsera nsalu yonse)	5810
Zoyala pamwamba pa bedi	5811
Zopukutira monga matawelo osiyanasiyana	6001
Zovala zoluka	6002
Zovala (zovala zatsopano zokha)	Chaputala 61 ndi 62

Dzina la Katundu	Nambala ya HS
Mabulangete ndi zovunda paulendo	6301
Nsalu yoyala pa bedi, ya patebulo, yakuchimbudzi ndi kukitchini	6302
Nsapato zosalowa madzi	6401
Nsapatso za labala, pulasitiki, chikopa kapena zophatikiza chikopa ndi nsalu	6404
Magawo a nsapato	6405
Tsitsi lowonjezelela	6703
Mawaya ndi ma kebo amkuwa	7408
Makina opangila ma 'Freezit'	833880
Makina opangila makandulo	841989
Mapulawo ndi zipangizo zake	843210 ndi 843290
Makina opangira pinati bata	843780
Mabatili agalimoto: Chloride, Victor onion, Exide	850710
Zipangizo za pa meni switchi ya magetsi (opangidwa ndi makampani monga Imperial, ndi Mukonitronics)	853521-853529, 853620
Maswitchi	853530 ndi 853630 – 853650
Bopeni, zochekenela, ndi zina zotere.	9608
Zosema-sema pazinthu zilizonse	9703
Crisps	2005
Sopo wocapila wa 'STA-Soft'	3402
'Bisto' wamu supu	2104
Ma padi a 'Nina'	5601
Ma seti a masamu (Mathematical sets)	9017



Gulu 3: STR COMMON LIST (Katundu Wovomezedwa):

Zimbabwe ndi Malawi pa nthawi pamene kabuku aka kanali kusindikizidwa.

Dzina la Katundu	Nambala ya HS
Nyama zamoyo	Chitsauko 1 kusanganisira 0101 kusvika 0106
Mazila aawisi a ndiwo kapena oti akaswe anapiye	0407
Mbatata, ziwisi kapena zamkakopo	0701
Tomato, uwisi kapena wamkakopok	0702
Anyezi, galiki, mavwende	0703
Kabici, kolifulawa, ndi zina zotele.	0704
Letesi	0705
Kaloti, mpilu, tchomoliya, bitiruti, ndi zakudya zina zomera pansu	0706
Nkhaka ndi mponda	0707
Nandolo, nyemba ndi zina zokhala ngati nyemba (zaziwisi kapena zamkakopo)	0708
Ndiyo zina zamasamba (asiparagasi, mabilinganya, celery, bowa, ndi zina zotele)	0709
Ndiyo za masamba zowuma (kuphatikizapo bowa wosiyana-siyana)	0712
Nyemba zouma, mphodza, kuphatikizapo za mbewu	0713
Mbewu	0713
Nthochi	0803



Gulu 4: STR COMMON LIST (Katundu Wovomezedwa):

Malawi ndi Zambia pa nthawi pamene kabuku aka kanali kusindikizidwa

Dzina la Katundu	Nambala ya HS
Zamukitchini (aluminiumu ndi mapoto acitsulo)	73.23 ne76.15
Ufa	11.02
Chimanga	10.05
Feteleza	31.05
Mbewu	Chitsauko 12
Zakudya zaziwisi monga nandolo, nyemba (nandolo zatsopano, nyemba)	07.08
Kabichi	07.04
Kaloti	07.06
Zamasamba	Chitsauko 7
Mango	08.04
Nshawa	12.02
Nyemba zouma ndi nandolo zouma	07.13
Mazila	04.07
Thonje	23.03 23.06
Tsabola/paprika	09.04
Madzi a minelo	22.01
Mafuta ophikira	15.12
Topitisa mpweya m'nyumba	39.17
Matayelo amiyala	68.10
Nyemba Zouma	07.13
Sopo ndi zosukila zosiyana-siyana	34.01 34.02



Gulu 5: STR COMMON LIST (Katundu Wovomezedwa):

Malawi ndi Zimbabwe pa nthawi pamene kabuku aka kanali kusindikizidwa

Dzina la Katundu	Nambala ya HS
Zipangizo zapulasitiki zolowetsela mpweya m'nyumba	3917/3917.33
Saka lopanda kanthu	63.05
Chinangwa ndi zinthu zopangidwa kucokela ku chinangwa	07.14 and 11.08
Zingwe za twaini	56.07
Mkaka wamadzi ndiponso zinthu zochoka ku mkaka	04.01
Zipangizo zopangila mipando ya nsungwi	56.07
Mbaula ya malasha ndi mbaula yopangidwa ku dothi	68.15 and 25.08
Zoluka ndi manja (mtanga, tileyi yoluka)	46.02
Mapila	10.08
Mapepala otengeramo zakudya (pepala losalowa mafuta)	48.19
Tsabola wa mubotolo	21.03
Tishu	48.18
Mapepala opukutira m'manja patebulo	96.19
Mipando ya pulasitiki	94.03
Makandulo	34.06
Mapensulo	96.09
Zopangila aisikilimu	21.05
Mapepala oyelesela	47.07
Makina opangila aisikilimu	8418.69.00
Makina opangila popukoni	84.19 and 85.16
Zopangila faiba gilasi	39.26
Faiba gilasi	70.19
Mafelemu a m'mawindo	76.10
Ulfa wa tirigu	11.01
Zomatila m'mawindo	32.14
Mafuta a thonje / mpenyadzuwa / ndiyo zamasamba / soya binzi ndi a nshawa	15.12,15.07 and 15.08

Dzina la Katundu	Nambala ya HS
Masaka opanda kanthu	63.05
Zikopa	41.04 and 41.05
Zinthu zapulasitiki (makontena, beseni, mipando, mbale ndi makapu)	39.24, 39.26 and 94.03
Majalini	15.17
Mafuta odzola osiyana-siyana	33.04
Polishi wa m'nyumba komanso wansapato	34.05
Maswiti, chingamu	17.04
Mabopeni ndi Mapensulo	96.08 and 96.09
Ulus wolukila	51.09
Makandulo	3406.00.0
Zakudya zazing'ono kapena masinaki (cipisi cam'pepala ndi kamba)	19.04 and 19.05
Penti	32.08 32.09
Makasu / nkhwangwa	82.01
Matumba apulasitiki	3923.21 3923.29
Monga uli monga kachasu	22.08, 22.06
Mapila	10.08
Matabwa oika ku mtenje	92.06
Ngoma	92.06
Makebo ndi mawaya amagetsi	85.44
Zipangizo za nyimbo zamakolo	92.02
Mabelo a chikhalidwe ndiponso zipangizo zoimbidwa mogwiritsira ntchito miyendo	92.08
Zoimbila za mutundu wa Chiloizotchedwa Malimba	92.02
Nyama ya mukakopo	16.02
Tchizi	04.06
Nsomba za fuleshi	03.04
Mowa wakuda	22.06
Mpasa	46.01

Dzina la Katundu	Nambala ya HS
Zipangizo zokhudza ntchito zokonza za mapaipi	39.17
Chinangwa ndi zinthu zopangidwa kucokela ku chinangwa	07.14 11.06
Malata	72.10
Zoyala patebulo zapulasitiki	39.26
Wilibala/ Galimoto	8716.80
Madilamu apulasitiki	39.23
Mooba zazikulu	22.03



DONGOSOLO LA NON-TARIFF BARRIER REPORTING SYSTEM

Mabungwe a Common Market for Eastern and Southern Africa (COMESA) ndi Southern Africa Development Community (SADC) akhazikitsa njira yotumiza uthenga kudzela pa SMS Short Message Service(SMS) kuti azidziwitsidwa, zomwe zikubwezela m'mbuyo malonda m'dera lino.

Mawu akuti Non-Tariff Barriers (NTBs) akunena za zinthu zimene zimabwezela m'mbuyo anthu acita malonda ndipo zimakhala cifukwa ca kuletsa zocita zina pa malonda, kuika malile pa katundu kapena ndalama, kapenanso malamulo ena ake amene amacititsa kuti kulowetsa kapena kutulutsa katundu m'kuzikhala kovuta ndiponso kodula kwambili.

Uthenga wa pa SMS umayendela pamodzi ndi njira ina ya pa intaneti yokonzela ma lipoti, kuunika mmene zinthu zikuyendela ndiponso kucotsa mfundo zimenezi za non-tariff barriers (NTB). Njira ya SMS iyamba kugwira ntchito monga mbali yolimbikitsa ndiponso kufulumizitsa ntchito yocotsa zopinga zonse zotele m'maboda.

Zitsanzo za Zopinga Zolepelesa Anthu a Zamalonda Kupita Patsogolo

Kulesa kulowetsa katundu m'dziko



Kukulukitsa kapena kucita tsanku pa nkhani ya malamulo a kumene katundu wacokera



Zitsanzo za Zopinga Zolepelesa Anthu a Zamalonda Kupita Patsogolo

Kuumiilila kuti katundu wocokera m'dziko lina azikhala wa kwality inayake.



Kulimbisa kwambili malamulo okhudza kuika katunduyo m'mapepala kapena m'zinthu zina zotele,

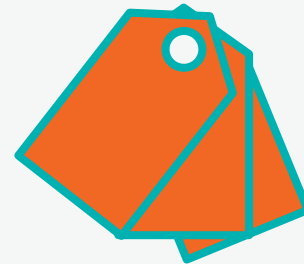


Kutsimikiza ngati dziko limene litumiza katundu lili ndi ziyeneleso.

Kulimbisa kwambili malamulo okhudza ukhondo.



Kulemba mawu odziwitsa anthu za katunduyo, kwality yake, ndipo za malamulo ambilimbili ofunikila,



Kuona ngati bungwe kapena kampani imene ikutumiza katunduyo kunjira ili ndi ziyeneletso.

Kodi mukukumana ndi zovuta zotelo?

Kodi mukudziwa kuti mutha kupereka lipoti lofotokozero boma za mavuto amenewa pogwilitsa dongosolo la non-tariff barrier monitoring system?

Kodi mukukumana ndi mavuto potumiza kapena kulowetsa katundu wanu kucoka m'dziko lina?

Perekani lipoti pogwilitsa ntchito manambala aya:

Zambia

SMS Number:

+260976757643



Zimbabwe

SMS Number:

+263715876373



Malawi

+265 992 595674



Eswatini

+27 72 949 2093



Mozambique

+27 72 949 2093



Sankhani dziko kuchokera pa mndandanda womwe uli pamwambapa ndipo tumizani SMS ya NTB ndi mfundo zofunika a:

- Kodi muli ndi vuto lotani?
- Kodi zinacitika kuti ndipo zinacitika liti?
- Dzina la wamalonda.
- Nambala ya munthu wamalonda.

Kodi njila iyi imagwira ntchito motani?

1

Wodandaula amatumiza uthenga wake pa SMS kuwaziwitsa za vuto lake

2

Madandaulo asungidwa mu NTB ndipo Administrator akudziwitsidwa

3

Iye akupereka ntchitoyi kwa a Regional Economic Community ndi a Focal Point m'deralo kuti athandizepo

4

Wodandaula akudziwitsidwa kuti madandaulo aperekedwa ku Focal Point ndipo azawasamalila

5

A m'gulu la Regional Economic Community ndi la Focal Points akuyamba kuchitapo kanthu pa vuto lija ndipo akulemba ndemanda zawo

6

Ngati vuto lathetsedwa, woyang'anira amalemba pakopyuta kuti madandaulowo akonzedwa

7

Wodandaula amadziwitsidwa kuti kudandaula kwake kwasamalilidwa

☎ +27 11 318 1012

✉ info@southernafricatrust.org

🌐 www.southernafricatrust.org

📍 45 Kyalami Blvd, Kyalami Park,
Midrand, 1684, South Africa



Bukhuli lapangidwa ndi Stractiv8 Digital